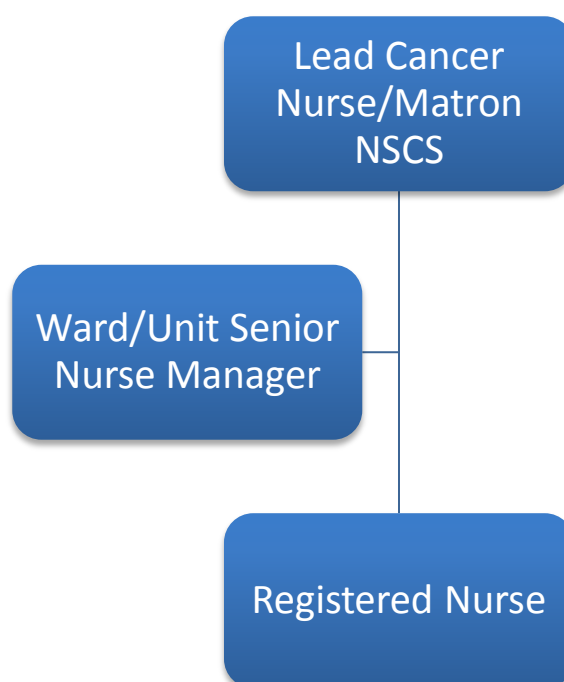


JOB DESCRIPTION

Job Title:	Oncology/Haematology Registered Nurse
Band/Pay:	Band 5
Department:	Turner Ward/RGDU

Cancer Services – P&B ISU



Job overview

One of the most rewarding parts of being an Oncology/Haematology/SACT nurse caring for patients undergoing treatment for a cancer diagnosis is that you are part of their strongest support system and you often have long term, ongoing contact with them and their relatives. You get to know them as people and build strong meaningful relationships. This creates a very rewarding bond. Being there for them and their family during their most difficult and challenging moments in their life offering comfort and alleviating some of their fears and concerns is incredibly rewarding. You have the opportunity to make such a difference to what is often an incredibly difficult journey for them. This is not always emotionally easy but made possible with the help and incredibly important support of the Turner and Ricky Grant team.

Main duties of the job

To work across both Turner ward and Ricky Grant Day Unit as a registered nurse within a team responsible for the care of patients admitted as a result of their cancer diagnosis or side effects of their treatment and for the administration of Systemic anti-cancer therapies (SACT) in the nurse led Day Unit setting.

To be part of the ward/unit team responsible for the assessment, development, implementation and evaluation of patient care under the guidance of the ward and unit sister/ward manager. You will be working closely with other professional colleagues to ensure that consistently high standards and quality of care for patients are maintained and that the patient's needs are met.

To improve practice by continuous professional development. You will gain a broad spectrum of clinical proficiency to deliver SACT.

To conform to COSHH and Health and Safety regulations whilst dealing with cytotoxic drugs ensuring a safe working environment

To provide clinical advice, training, education and support to patients, relatives and other professional colleagues.

To promote a safe clinical environment for all patients, their carer's, visitors and staff and to comply with the Trust and relevant network policies, procedures, guidelines, protocols, values and expected behaviours.

About your new team and department

Join a supportive and warm dedicated working culture, where your contribution is valued, and you can help us deliver our core values: Caring, Inspiring and innovative, which supports our belief in compassion and high-quality service

The Cancer team at TORBAY and South Devon NHS Trust is proud of its diverse workforce and is committed to building a team that represents a variety of backgrounds, perspectives, and skills. If you think you have the skills and experience for the job, please apply - we would love to hear from you.

Detailed job description and responsibilities

Communication and working relationships

- Develop the ability to be an effective communicator with patients their families and those important to them, as well as colleagues and representatives of other health care organisations
- Communicate in a sensitive manner to guide patients and carers through progress, treatment, intent and possible outcomes. To deal with empathy with

progressive disease, failure of treatment and preparation for the terminal stages of illness

- Develop the skills to anticipate patient reaction and plan an appropriate style in view of patient problems and lifestyle
- Communicate respectfully to colleagues and patients
- Maintain accurate and legible nursing records

Planning and organisation

- Develop time-management skills and the ability to prioritise nursing care for a group of patients
- Be rostered as part of the departmental nursing establishment to care for patients over 11.5- or 10-hour period. This will include working shift patterns, nights and weekends

Responsibility and accountability

- This post involves being part of a multi-disciplinary team, working with other RGN's, Assistant Practitioners, Healthcare assistants, students, domestics and ward clerk and all other learners
- Develop the ability to work as a member of the inter-professional team delivering care to individuals
- Develop an awareness of self, the knowledge of the limits of own competence, the ability to seek advice and support to look after self effectively

Policy and service responsibility

- Administer medicines as defined in the NMC Standards for Medicines Administration (NMC 2010) and the Trust's Medicines Management Policy
- Document the process of care effectively according to the Record Guidance for Nurses and Midwives (NMC 2010) and the Trust policy

Responsibility for finance, equipment and other resources

- Budgetary Implications: No direct budgetary responsibility but to be aware of resources available and cost implications
- To be aware of equipment used that needs to regularly serviced and maintained

Responsibility for supervision, leadership and management

- Supervise all members of the staff within your given team from student nurses to Band 2 and Band 4 and provide leadership as a role model
- To support and help develop the Trust culture of collaborative, flexible cross-team working and commitment to delivering high quality service and outcomes
- Set and maintain the highest personal and professional standards
- To have a flexible, friendly approach and positive outlook

Information technology and administrative duties

- Allocate
- ESR/HIVE
- Cyber lab
- Blood Matters
- Ultragenda
- Infoflex

- Chemocare
 - Outlook/Windows10
-

PERSON SPECIFICATION

Attributes	Essential	Desirable
Qualifications and training	<ul style="list-style-type: none"> Registered Nurse Adult Current/awaiting registration with NMC Evidence of continuing professional development Interest in Oncology and Haematology 	<ul style="list-style-type: none"> SACT administration Completed SACT Passport Advanced communication
Knowledge and experience	<ul style="list-style-type: none"> Experience of working in a ward/day unit environment Ability to organise and prioritise work load for self and others 	<ul style="list-style-type: none"> Knowledge of wound care and dressings
Specific Skills	<ul style="list-style-type: none"> Ability to assess, plan and evaluate patient care Effective Communication skills Management of an acutely ill patient Good interpersonal skills with particular ability to liaise effectively with multidisciplinary team members Evidence of working well within a team Ability to demonstrate motivation Ability to work accurately and reliably under pressure Ability to make decisions, organise and prioritise own workload 	<ul style="list-style-type: none"> Computer literacy

	<ul style="list-style-type: none"> • Evidence of commitment to customer care initiatives • Awareness of quality issues • Motivated to learn • Able to balance work, study and personal life 	
Requirements due to work environment/conditions	<ul style="list-style-type: none"> • Ability to work shifts, including night duty, weekends across both areas • Flexibility to meet the needs of the service 	

Physical skills	<ul style="list-style-type: none"> • Highly developed physical skills where accuracy is important • Dealing with violent and aggressive patients
Physical effort	<ul style="list-style-type: none"> • Accuracy and attention to detail
Emotional effort	<ul style="list-style-type: none"> • Dealing with distressed patients and relatives • Care for terminally ill
Mental effort	<ul style="list-style-type: none"> • Calculating drug doses, concentration checking documents, constant interruptions and demands