

## Job Description

<b>Job Title:</b>	Senior Community Podiatrist
<b>Base:</b>	Swindon Health Centre, with travel to other sites within the town.
<b>Grade:</b>	Band 6
<b>Reporting to:</b>	Band 7 Podiatrist

### Our Values

Our STAR values are at the heart of everything we do. You can expect to see them in the way we act and the way we treat each other. Our values make us who we are.

- Service** We will put our patients first
- Teamwork** We will work together
- Ambition** We will aspire to provide the best service
- Respect** We will act with integrity

### Main Purpose of the Job

To work as part of the integrated podiatry team, providing care in accordance with service criteria. This will include working independently in clinics, hospitals, GP practices and domiciliary settings, providing high quality clinical care in accordance with NICE Guidance

To assess, diagnose, and implement individual treatment plans for patients with a wide variety of clinical needs. Most commonly care will be provided for patients at risk, who suffer from metabolic, vascular, neurological disorders, or musculoskeletal pathologies, and in growing toenails requiring surgical avulsion.

### Main Responsibilities and Duties

1. To be responsible for the assessment, diagnosis, planning, implementation and evaluation of Podiatric care to a variety of patients with a wide variety of clinical needs.
2. Care will be provided in a range of Primary, Community and Secondary care settings, working independently
3. To be responsible for the assessment and diagnosis of new patients with subsequent production and completion of individual care plans which may include administration of local anaesthesia, the provision of nail surgery, orthotics, wound management and provision of appropriate foot health education advice to individuals and groups of patients.
4. To be responsible for the referral of patients who require the intervention of other professional and other departmental specialist areas by following agreed departmental referral pathways e.g. onto the acute podiatry pathway, orthopaedics or physiotherapy.
5. To have highly developed physical skills, precision hand/eye coordination for prolonged periods and as required when carrying out surgical techniques and specialist debridement.
6. To carry out annual diabetic foot reviews, in accordance with NICE clinical guidelines [NG19], including neurovascular assessments, and the use of Doppler ultrasound.
7. To be actively involved in the provision of Foot Health Education to patients relatives and carers.

8. To be responsible for the day-to-day planning of personal workloads in relation to the completion of home visits and to residential homes or ward visits as appropriate.
9. To follow departmental policies procedures and guidelines but have the discretion to make a clinical diagnosis and decisions within professional boundaries.
10. To work according to the podiatry service and GWH policies and procedures, including for the management of patients' complaints.
11. To take responsibility for the day to day running of their immediate clinical environment with regard to quality and health and safety; this could include the monitoring of appointment availability, identification of adequate stock levels, maintenance of equipment and the provision of information to line manager to enable effective service planning.
12. To work effectively as a member of the multi professional team
13. To ensure effective communication with patients, relatives and carers where there may be barriers to understanding or unwelcome news to deliver.
14. To be involved in the induction, supervision and guidance of Band 5/ apprentice or student podiatrists.
15. To maintain accurate records of all patient consultations and related work carried out in a clinical session, including computerised data collection according to departmental guidance, in a timely manner
16. To participate in audit activities, data collection/submission and review of outcomes.
17. To keep up to date with and apply any relevant evidence based research finding practice.
18. To maintain registration with the HCPC and to work within the HCPC and Society of Chiropodists and Podiatrists codes of conduct.
19. To have the capability to move and handle patients on at least a daily basis where appropriate, who may be immobile wheelchair or bed-bound, often in confined spaces.
20. To agree with patients an appropriate treatment plan including imparting difficult or unwelcome news regarding their condition and its impact on their life.
21. You may be required to work at or from any additional location as may be determined by GWH from time to time. GWH also reserves the right from time to time to change your base on a permanent basis to a location determined by it at the time that the change is made.
22. You may also be required to travel between premises as may be required for the performance of your duties.

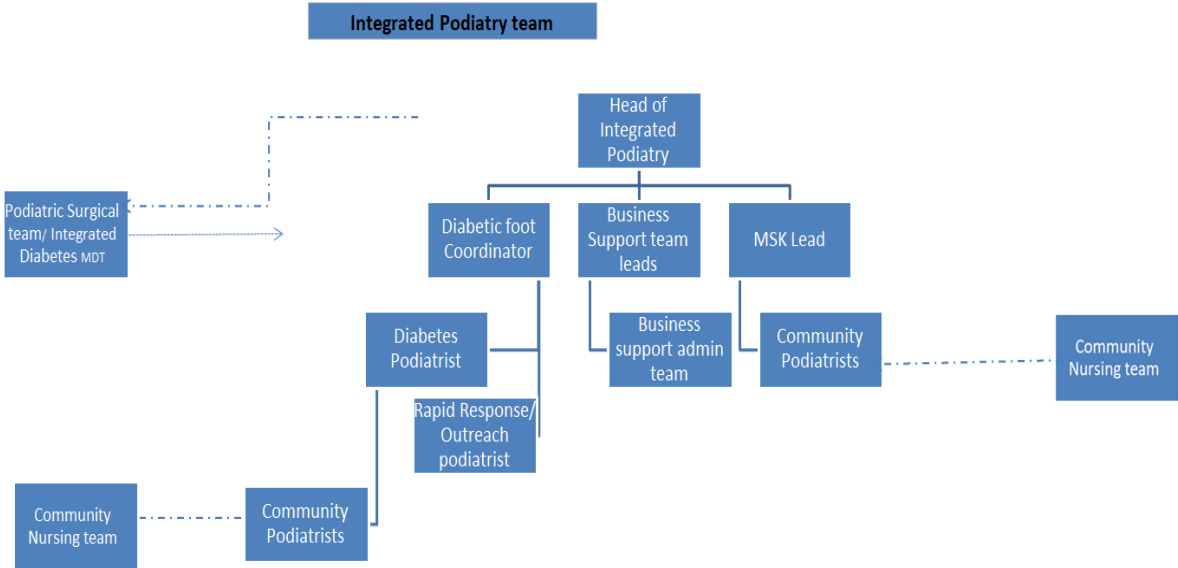
## Flexibility

This job description is not intended to be exhaustive and it is likely that duties may be altered from time to time in the light of changing circumstances, in discussion with the post holder. This role profile is intended to provide a broad outline of the main responsibilities only. The post holder will need to be flexible in developing the role with initial and on-going discussions with the designated manager.

## Supplementary Information

This job description should be read alongside the Supplementary Information provided on NHS Jobs for applicants and alongside the Employee Handbook for current staff members.

Organisational Structure



## Person Specification

<b>Job Title:</b>	Senior Community Podiatrist
<b>Base:</b>	Swindon Health Centre, with travel to other sites

The following criteria will be assessed from information provided on your completed application form, during the shortlisting and assessment process, and by your referees.

Criteria	Essential	Desirable
<b>STAR Values</b>	We will expect your values and behaviours to reflect the STAR Values of the organisation: <b>Service</b> - We will put our patients first <b>Teamwork</b> - We will work together <b>Ambition</b> - We will aspire to provide the best service <b>Respect</b> - We will act with integrity	
<b>Education, Qualifications and Training</b>	<ul style="list-style-type: none"> <li>Diploma/Degree in Podiatry</li> <li>HPC Registration as a Podiatrist</li> <li>Local anaesthetic certificate</li> <li>Evidence of Continuing Professional Development</li> </ul>	<ul style="list-style-type: none"> <li>Evidence of Post Graduate Study relevant to podiatry</li> </ul>
<b>Experience</b>	<ul style="list-style-type: none"> <li>Significant post qualification clinical experience, in the podiatric setting</li> <li>Experience of working within the NHS</li> <li>Experience of creating and evaluating treatment plans</li> <li>Experience of nail surgery techniques</li> <li>Experience of treatment of high risk patient groups</li> <li>Experience of Vascular and Neurological testing</li> <li>Experience of Biomechanical assessment and orthotic prescription</li> <li>Experience of Working within teams</li> </ul>	<ul style="list-style-type: none"> <li>Experience of working in a community setting, including patients' place of residence</li> </ul>
<b>Knowledge and Skills</b>	<ul style="list-style-type: none"> <li>Evidence of CPD in a portfolio</li> <li>Experience of supervision of staff</li> <li>Production and evaluation of clinically appropriate treatment plans</li> <li>Carrying out nail surgery techniques</li> <li>Clinically effective treatment of high risk patient groups</li> <li>Carrying out Vascular and Neurological testing</li> <li>Understanding of basic orthotic prescription</li> <li>Well-developed hand eye coordination for debridement and surgical procedures</li> <li>Knowledge of referral pathways</li> <li>Knowledge of the clinical governance agenda, including audit.</li> </ul>	<ul style="list-style-type: none"> <li>Competent in using SystmOne electronic notes</li> </ul>

	<ul style="list-style-type: none"> <li>• Ability to use evidence-based practice skills when making clinical decisions.</li> <li>• Understanding of Confidentiality and record keeping</li> <li>• Good organisational skills</li> <li>• Able to work effectively within teams</li> <li>• Excellent standard of written and verbal communication skills</li> <li>• Ability to work under pressure and use own initiative</li> <li>• Ability to organise and prioritise own work</li> <li>• Understanding of the principles of lone working</li> </ul>	
<b>Other Job-Related Requirements</b>	<ul style="list-style-type: none"> <li>• Willing to work in other areas of the Trust or Trust-wide as and when required to do so.</li> <li>• Full driving licence and access to a vehicle for work</li> <li>• Highly developed physical skills, precision hand/eye coordination to enable carrying out clinical and surgical techniques</li> <li>• Capability to move and handle patients on at least a daily basis where appropriate</li> </ul>	